



Vincotech

10-EY076PA075I7-L193F08T

target datasheet

flowPACK E2

650 V / 75 A

Topology features

- Open Emitter configuration
- Temperature sensor
- Inverter
- Low side Kelvin Emitter for improved switching performance

Component features

- Easy paralleling
- Low collector emitter saturation voltage
- Low turn-off losses
- Positive temperature coefficient

Housing features

- Convex shaped substrate for superior thermal contact
- Compact housing
- CTI600 housing material
- Thermo-mechanical push-and-pull force relief
- Press-fit pin
- Reliable cold welding connection

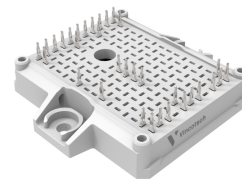
Target applications

- General Purpose Drives
- HVAC
- Industrial Drives

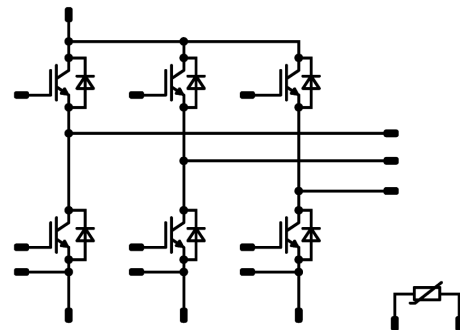
Types

- 10-EY076PA075I7-L193F08T

flow E2 12 mm housing



Schematic





Vincotech

10-EY076PA075I7-L193F08T
target datasheet

Maximum Ratings

$T_j = 25\text{ °C}$, unless otherwise specified

Parameter	Symbol	Conditions	Value	Unit
Inverter Switch				
Collector-emitter voltage	V_{CES}		650	V
Collector current (DC current)	I_C	$T_j = T_{jmax}$ $T_s = 80\text{ °C}$	69	A
Repetitive peak collector current	I_{CRM}	t_p limited by T_{jmax}	225	A
Turn off safe operating area		$T_j = 150\text{ °C}$, $V_{CE} = 1200\text{ V}$	225	A
Total power dissipation	P_{tot}	$T_j = T_{jmax}$ $T_s = 80\text{ °C}$	95	W
Gate-emitter voltage	V_{GES}		± 20	V
Short circuit ratings	t_{SC}	$V_{GE} = 15\text{ V}$, $V_{CC} = 400\text{ V}$ $T_j = 150\text{ °C}$	3	μs
Maximum junction temperature	T_{jmax}		175	$^{\circ}\text{C}$

Inverter Diode

Peak repetitive reverse voltage	V_{RRM}		650	V
Forward current (DC current)	I_F	$T_j = T_{jmax}$ $T_s = 80\text{ °C}$	53	A
Repetitive peak forward current	I_{FRM}	t_p limited by T_{jmax}	225	A
Total power dissipation	P_{tot}	$T_j = T_{jmax}$ $T_s = 80\text{ °C}$	77	W
Maximum junction temperature	T_{jmax}		175	$^{\circ}\text{C}$

Module Properties

Thermal Properties

Storage temperature	T_{stg}		$-40...+125$	$^{\circ}\text{C}$
Operation temperature under switching condition	T_{jop}		$-40...+(T_{jmax} - 25)$	$^{\circ}\text{C}$

Isolation Properties

Isolation voltage	V_{isol}	DC Test Voltage $t_p = 2\text{ s}$	6000	V
Creepage distance			$> 12,7$	mm
Clearance			9,08	mm
Comparative Tracking Index	CTI		≥ 600	



Vincotech

10-EY076PA075I7-L193F08T
target datasheet

Characteristic Values

Parameter	Symbol	Conditions					Values			Unit
			V_{GE} [V] V_{GS} [V]	V_{CE} [V] V_{DS} [V] V_F [V]	I_C [A] I_D [A] I_F [A]	T_j [°C]	Min	Typ	Max	

Inverter Switch

Static

Gate-emitter threshold voltage	$V_{GE(th)}$	$V_{CE} = V_{GE}$			0,00075	25	4,35	5	5,65	V
Collector-emitter saturation voltage	V_{CEsat}		15		75	25		1,35	1,65	V
Collector-emitter cut-off current	I_{CES}		0	650		25			20	µA
Gate-emitter leakage current	I_{GES}		20	0		25			100	nA
Internal gate resistance	r_g							None		Ω
Input capacitance	C_{ies}	$f = 1 \text{ Mhz}$	0	25		25		4460		pF
Output capacitance	C_{oes}							135		pF
Reverse transfer capacitance	C_{res}							46		pF
Gate charge	Q_g	$V_{CC} = 520 \text{ V}$	15		75	25		435		nC

Thermal

Thermal resistance junction to sink	$R_{th(j-s)}$	$\lambda_{paste} = 3,4 \text{ W/mK}$ (PSX)						1		K/W
-------------------------------------	---------------	---	--	--	--	--	--	---	--	-----

Inverter Diode

Static

Forward voltage	V_F				75	25		1,65	2	V
Reverse leakage current	I_R	$V_r = 650 \text{ V}$				25			20	µA

Thermal

Thermal resistance junction to sink	$R_{th(j-s)}$	$\lambda_{paste} = 3,4 \text{ W/mK}$ (PSX)						1,23		K/W
-------------------------------------	---------------	---	--	--	--	--	--	------	--	-----



Vincotech

10-EY076PA075I7-L193F08T
target datasheet

Characteristic Values

Parameter	Symbol	Conditions					Values			Unit
			V_{GE} [V] V_{GS} [V]	V_{CE} [V] V_{DS} [V] V_F [V]	I_C [A] I_D [A] I_F [A]	T_j [°C]	Min	Typ	Max	

Thermistor

Static

Rated resistance	R					25		5		kΩ
Deviation of R100	$\Delta_{R/R}$	$R_{100} = 499 \Omega$				100	3,2		3,3	%
Power dissipation	P					25		130		mW
Power dissipation constant	d					25		1,3		mW/K
B-value	$B_{(25/50)}$	Tol. $\pm 1 \%$						3380		K
Vincotech Thermistor Reference									V	



Vincotech

10-EY076PA075I7-L193F08T

target datasheet

Ordering Code	
Version	Ordering Code
Without thermal paste	10-EY076PA075I7-L193F08T
With thermal paste (5,2 W/mK, PTM6000HV)	10-EY076PA075I7-L193F08T-/7/

Marking						
	Text	Name	Date code	UL & VIN	Lot	Serial
		NN-NNNNNNNNNNNNNNNN- TTTTUV	WWYY	UL VIN	LLLL	SSSS
	Datamatrix	Type&Ver	Lot number	Serial	Date code	
		TTTTTUV	LLLL	SSSS	WWYY	

Outline

Pin table [mm]

Pin	X	Y	Function
1	32	3,2	G16
2	32	0	Ph3
3	28,8	0	Ph3
4	25,6	0	Ph3
5	19,2	0	Ph2
6	16	0	Ph2
7	12,8	0	Ph2
8	12,8	3,2	G14
9	6,4	0	Ph1
10	3,2	0	Ph1
11	0	0	Ph1
12	0	3,2	G12
13	0	19,2	Therm1
14	0	28,8	Therm2
15	0	44,8	G11
16	0	48	S11
17	3,2	48	DC-1
18	6,4	48	DC-1
19	9,6	48	DC-1
20	12,8	48	S13
21	12,8	44,8	G13
22	16	48	DC-2
23	19,2	48	DC-2
24	22,4	48	DC-2
25	22,4	44,8	G15
26	25,6	48	S15
27	28,8	48	DC-3
28	32	48	DC-3
29	32	44,8	DC-3
30	12,8	25,6	DC+
31	12,8	22,4	DC+
32	12,8	19,2	DC+
33	12,8	16	DC+

center of press-fit pinhead
for connection parameter see the handling instruction

8,88 ± 0,1
0,5 ± 0,05

10,16
10,16

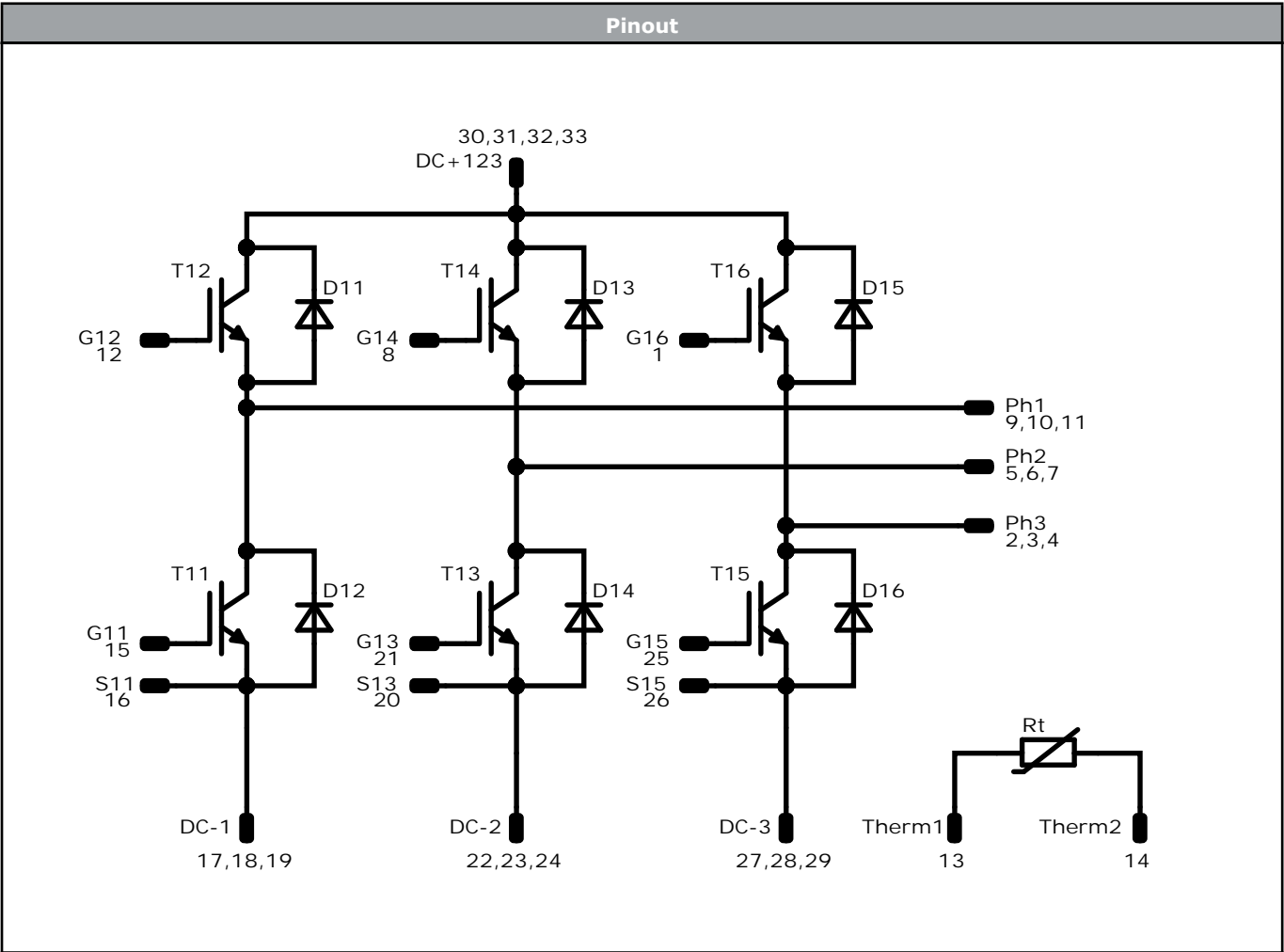
±0,4

10,16

Tolerance of pinpositions: ±0,4mm at the end of pins
Dimension of coordinate axis is only offset without tolerance.



Vincotech



Identification					
ID	Component	Voltage	Current	Function	Comment
T11, T12, T13, T14, T15, T16	IGBT	650 V	75 A	Inverter Switch	
D11, D12, D13, D14, D15, D16	FWD	650 V	75 A	Inverter Diode	
Rt	Thermistor			Thermistor	



Vincotech

10-EY076PA075I7-L193F08T
target datasheet

Packaging instruction				
Standard packaging quantity (SPQ) 100	>SPQ	Standard	<SPQ	Sample

Handling instruction
Handling instructions for <i>flow</i> E2 packages see vincotech.com website.

Package data
Package data for <i>flow</i> E2 packages see vincotech.com website.

Vincotech thermistor reference
See Vincotech thermistor reference table at vincotech.com website.

UL recognition and file number
This device is UL 1557 recognized under E192116 up to a junction temperature under switching condition $T_{j,op}=175^{\circ}\text{C}$ and up to 3500VAC/1min isolation voltage. For more information see vincotech.com website.



Document No.:	Date:	Modification:	Pages
10-EY076PA075I7-L193F08T-T1-14	22 May. 2025	Initial Release	

Product status definition		
Datasheet Status	Product Status	Definition
Target	Formative or In Design	This datasheet contains the design specifications for product development. Specifications may change in any manner without notice. The data contained is exclusively intended for technically trained staff.

DISCLAIMER

The information, specifications, procedures, methods and recommendations herein (together "information") are presented by Vincotech to reader in good faith, are believed to be accurate and reliable, but may well be incomplete and/or not applicable to all conditions or situations that may exist or occur. Vincotech reserves the right to make any changes without further notice to any products to improve reliability, function or design. No representation, guarantee or warranty is made to reader as to the accuracy, reliability or completeness of said information or that the application or use of any of the same will avoid hazards, accidents, losses, damages or injury of any kind to persons or property or that the same will not infringe third parties rights or give desired results. It is reader's sole responsibility to test and determine the suitability of the information and the product for reader's intended use.

LIFE SUPPORT POLICY

Vincotech products are not authorised for use as critical components in life support devices or systems without the express written approval of Vincotech.

As used herein:

1. Life support devices or systems are devices or systems which, (a) are intended for surgical implant into the body, or (b) support or sustain life, or (c) whose failure to perform when properly used in accordance with instructions for use provided in labelling can be reasonably expected to result in significant injury to the user.
2. A critical component is any component of a life support device or system whose failure to perform can be reasonably expected to cause the failure of the life support device or system, or to affect its safety or effectiveness.