



Vincotech

10-PY12ORA120VH-LJ96I03Y

datasheet

flowCON 1

1200 V / 120 A

Features

- 1200V Ultra-Fast Si-Diode
- Integrated Bypass Diode

Target applications

- Charging Stations
- Power Supply
- Welding & Cutting

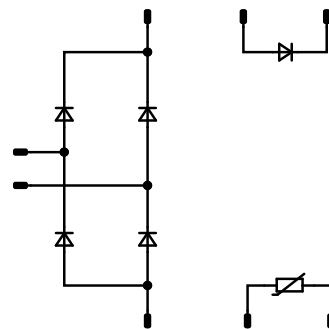
Types

- 10-PY12ORA120VH-LJ96I03Y

flow 1 12 mm housing



Schematic





Vincotech

Maximum Ratings

$T_j = 25\text{ °C}$, unless otherwise specified

Parameter	Symbol	Conditions	Value	Unit
Rectifier Diode				
Peak repetitive reverse voltage	V_{RRM}		1200	V
Forward current (DC current)	I_F	$T_j = T_{jmax}$ $T_s = 80\text{ °C}$	88	A
Repetitive peak forward current	I_{FRM}	t_p limited by T_{jmax}	240	A
Surge (non-repetitive) forward current	I_{FSM}	Single Half Sine Wave, $t_p = 10\text{ ms}$ $T_j = 45\text{ °C}$	920	A
Total power dissipation	P_{tot}	$T_j = T_{jmax}$ $T_s = 80\text{ °C}$	133	W
Maximum junction temperature	T_{jmax}		175	°C

ByPass Diode

Peak repetitive reverse voltage	V_{RRM}		1800	V
Forward current (DC current)	I_F	$T_j = T_{jmax}$ $T_s = 80\text{ °C}$	74	A
Surge (non-repetitive) forward current	I_{FSM}	Single Half Sine Wave, $t_p = 10\text{ ms}$ $T_j = 150\text{ °C}$	740	A
Surge current capability	I^2t		2740	A ² s
Total power dissipation	P_{tot}	$T_j = T_{jmax}$ $T_s = 80\text{ °C}$	83	W
Maximum junction temperature	T_{jmax}		150	°C

Module Properties

Thermal Properties

Storage temperature	T_{stg}		-40...+125	°C
Operation temperature under switching condition	T_{jop}		-40...+($T_{jmax} - 25$)	°C

Isolation Properties

Isolation voltage	V_{isol}	DC Test Voltage* $t_p = 2\text{ s}$	6000	V
Isolation voltage	V_{isol}	AC Voltage $t_p = 1\text{ min}$	2500	V
Creepage distance			>12,7	mm
Clearance			7.59	mm
Comparative Tracking Index	CTI		≥ 600	

*100 % tested in production



Vincotech

Characteristic Values

Parameter	Symbol	Conditions					Values			Unit
			V_{GE} [V] V_{GS} [V]	V_{CE} [V] V_{DS} [V] V_F [V]	I_C [A] I_D [A] I_F [A]	T_j [°C]	Min	Typ	Max	

Rectifier Diode

Static

Forward voltage	V_F				120	25 125 150		2 1,8 1,75	2,8 ⁽¹⁾	V
Reverse leakage current	I_R	$V_r = 1200$ V				25			100	μA

Thermal

Thermal resistance junction to sink ⁽²⁾	$R_{th(j-s)}$	$\lambda_{paste} = 3,4$ W/mK (PSX)						0,71		K/W
--	---------------	---------------------------------------	--	--	--	--	--	------	--	-----

ByPass Diode

Static

Forward voltage	V_F				80	25 125 150		1,18 1,15	1,23 ⁽¹⁾ 1,17 ⁽¹⁾	V
Reverse leakage current	I_R	$V_r = 1800$ V				25 150			50 1500	μA

Thermal

Thermal resistance junction to sink ⁽²⁾	$R_{th(j-s)}$	$\lambda_{paste} = 3,4$ W/mK (PSX)						0,84		K/W
--	---------------	---------------------------------------	--	--	--	--	--	------	--	-----



Vincotech

Characteristic Values

Parameter	Symbol	Conditions					Values			Unit
			V_{GE} [V] V_{GS} [V]	V_{CE} [V] V_{DS} [V] V_F [V]	I_C [A] I_D [A] I_F [A]	T_j [°C]	Min	Typ	Max	

Thermistor

Static

Rated resistance	R					25		22		kΩ
Deviation of R_{100}	$\Delta_{R/R}$	$R_{100} = 1484 \Omega$				100	-5		5	%
Power dissipation	P							5		mW
Power dissipation constant	d					25		1,5		mW/K
B-value	$B_{(25/50)}$	Tol. $\pm 1 \%$						3962		K
B-value	$B_{(25/100)}$	Tol. $\pm 1 \%$						4000		K
Vincotech Thermistor Reference									I	

⁽¹⁾ Value at chip level

⁽²⁾ Only valid with pre-applied Vincotech thermal interface material.



Vincotech

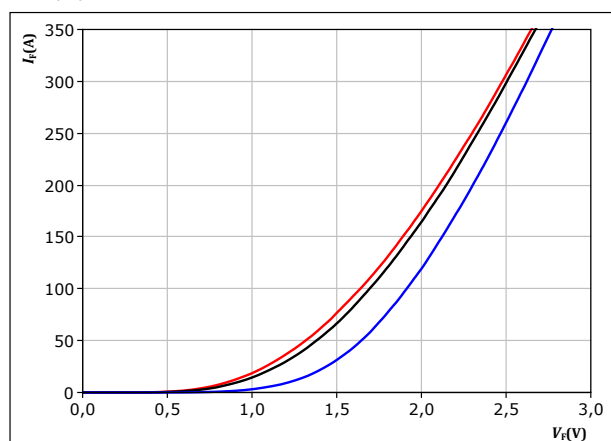
10-PY12ORA120VH-LJ96I03Y datasheet

Rectifier Diode Characteristics

figure 1. FWD

Typical forward characteristics

$$I_F = f(V_F)$$



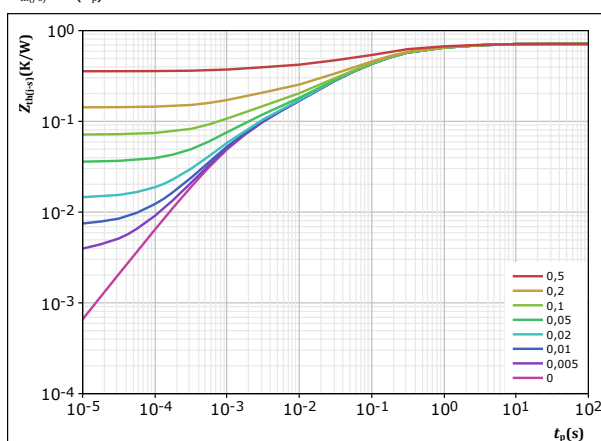
$t_p = 250 \mu s$

T_j : 25 °C, 125 °C, 150 °C

figure 2. FWD

Transient thermal impedance as a function of pulse width

$$Z_{th(j-s)} = f(t_p)$$



$D = t_p / T$

$R_{th(j-s)} = 0,713 \text{ K/W}$

FWD thermal model values

$R \text{ (K/W)}$	$\tau \text{ (s)}$
6,65E-02	2,92E+00
1,36E-01	4,74E-01
3,18E-01	9,39E-02
1,28E-01	1,31E-02
6,55E-02	1,24E-03



Vincotech

10-PY12ORA120VH-LJ96I03Y datasheet

ByPass Diode Characteristics

figure 3.

Rectifier

Typical forward characteristics

$$I_F = f(V_F)$$

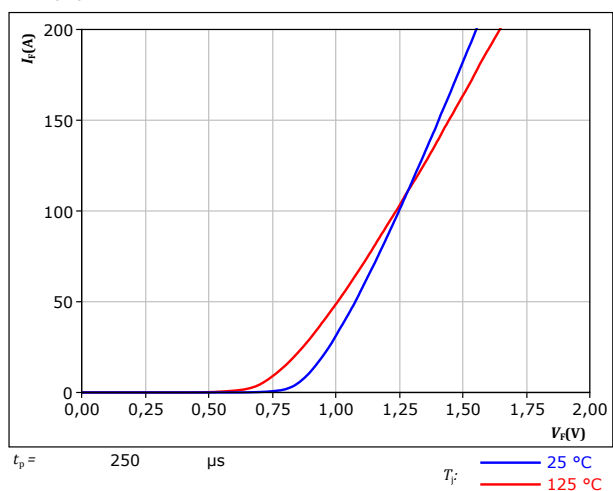
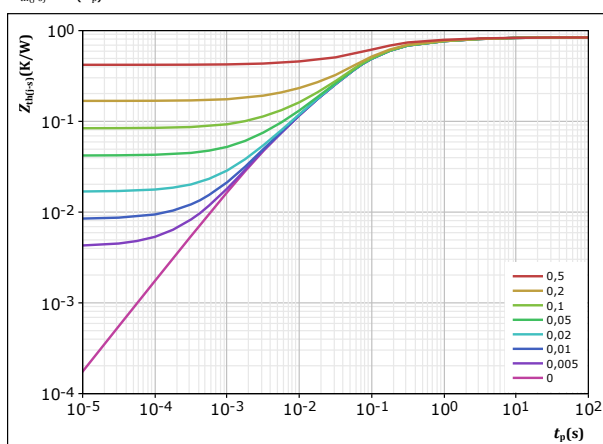


figure 4.

Rectifier

Transient thermal impedance as a function of pulse width

$$Z_{th(j-s)} = f(t_p)$$



$D =$	t_p / T	
$R_{th(j-s)} =$	0,84	K/W
Rectifier thermal model values		
R (K/W)	τ (s)	
4,69E-02	5,96E+00	
1,08E-01	8,86E-01	
3,74E-01	1,33E-01	
2,69E-01	4,72E-02	
4,14E-02	4,67E-03	



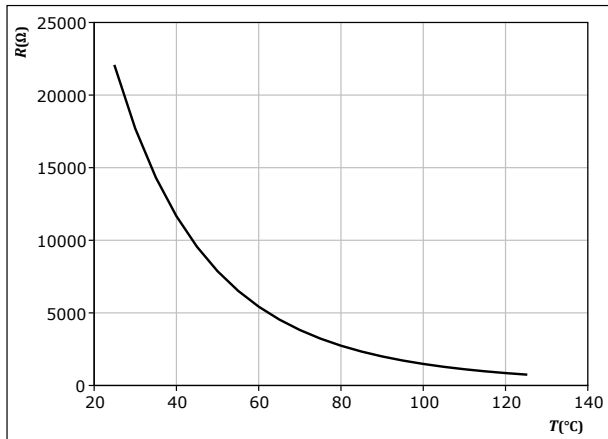
Vincotech

Thermistor Characteristics

figure 5. Thermistor

Typical NTC characteristic as function of temperature

$$R_T = f(T)$$





Vincotech

10-PY12ORA120VH-LJ96I03Y

datasheet

Ordering Code	
Version	Ordering Code
Without thermal paste	10-PY12ORA120VH-LJ96I03Y
With thermal paste	10-PY12ORA120VH-LJ96I03Y-/3/

Marking					
	Text	Name NN-NNNNNNNNNNNNNNNN- TTTTIVV	Date code WWYY	UL & VIN UL VIN	Lot LLLLL
	Datamatrix	Type&Ver TTTTITTVV	Lot number LLLLL	Serial SSSS	Date code WWYY

Pin table [mm]			
Pin	X	Y	Function
1	52,2	3	Therm1
2	52,2	0	Therm2
3	not assembled		
4	44,2	2,7	DC+Rect
5	44,2	0	DC+Rect
6	34,8	0	DC-Rect
7	32,1	0	DC-Rect
8	not assembled		
9	not assembled		
10	12,1	0	DC-Rect
11	9,4	0	DC-Rect
12	0	0	DC+Rect
13	0	2,7	DC+Rect
14	not assembled		
15	not assembled		
16	6,8	28,2	ACin1
17	9,5	28,2	ACin1
18	12,2	28,2	ACin1
19	not assembled		
20	not assembled		
21	28,8	28,2	ACin2
22	31,5	28,2	ACin2
23	34,2	28,2	ACin2
24	not assembled		
25	not assembled		
26	49,5	28,2	B2
27	52,2	28,2	B2
28	52,2	13,9	B1
29	52,2	11,2	B1
30	not assembled		

Outline

center of press-fit pinhead
for connection parameter see the handling instruction

12.8 ± 0.1
2.7 ± 0.1

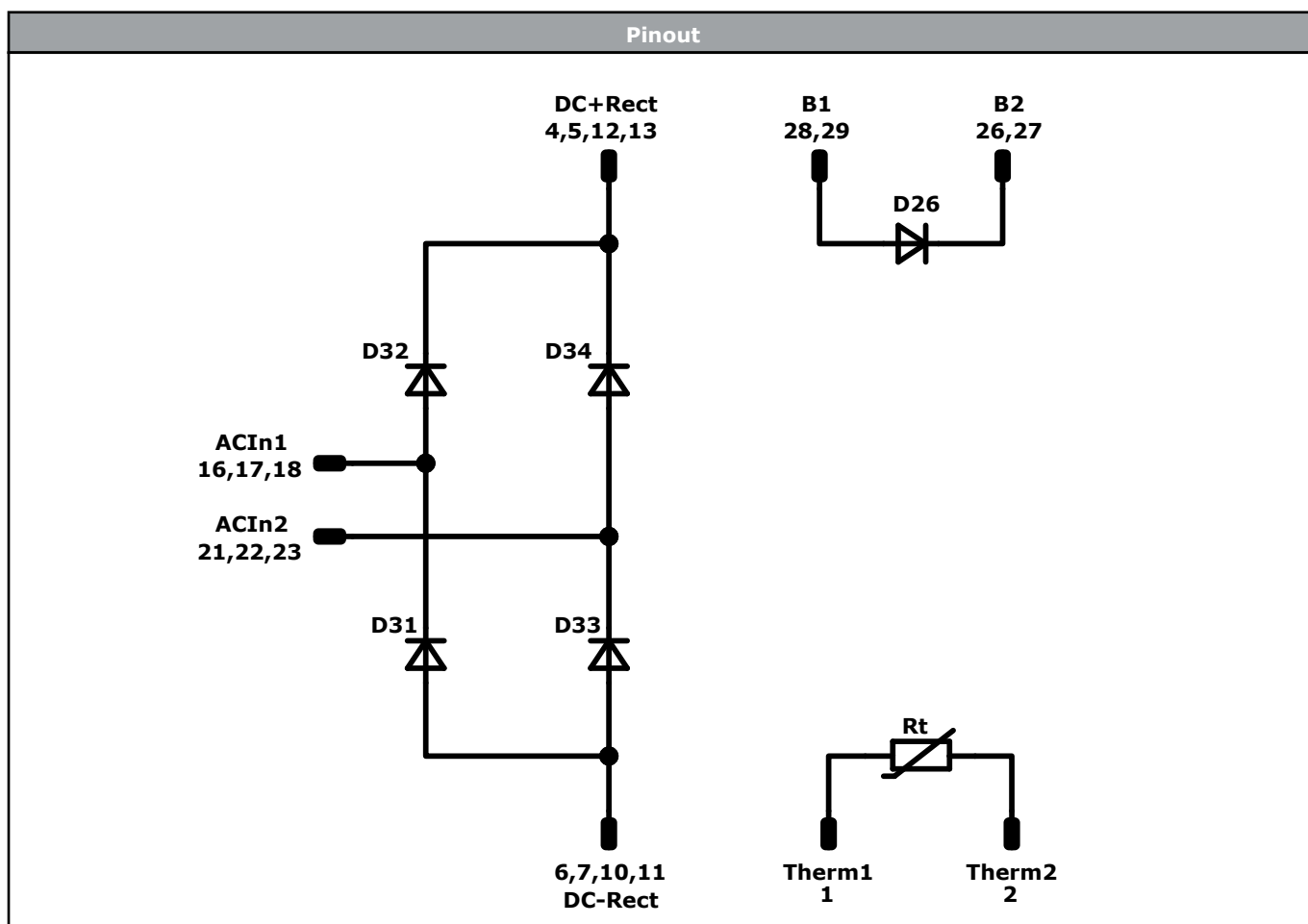
14.1
Y
X
26.1

Tolerance of pinpositions: ±0.5mm at the end of pins
Dimension of coordinate axis is only offset without tolerance



Vincotech

10-PY12ORA120VH-LJ96I03Y
datasheet




Identification					
ID	Component	Voltage	Current	Function	Comment
D31, D32, D33, D34	FWD	1200 V	120 A	Rectifier Diode	
D26	Rectifier	1800 V	80 A	ByPass Diode	
Rt	Thermistor			Thermistor	



Vincotech

10-PY12ORA120VH-LJ96I03Y
datasheet

Packaging instruction				
Standard packaging quantity (SPQ) 100	>SPQ	Standard	<SPQ	Sample
Handling instruction				
Handling instructions for <i>flow 1</i> packages see vincotech.com website.				
Package data				
Package data for <i>flow 1</i> packages see vincotech.com website.				
Vincotech thermistor reference				
See Vincotech thermistor reference table at vincotech.com website.				
UL recognition and file number				
This device is certified according to UL 1557 standard, UL file number E192116. For more information see vincotech.com website.				

Document No.:	Date:	Modification:	Pages
10-PY12ORA120VH-LJ96I03Y-D1-14	7 May. 2021		

DISCLAIMER

The information, specifications, procedures, methods and recommendations herein (together "information") are presented by Vincotech to reader in good faith, are believed to be accurate and reliable, but may well be incomplete and/or not applicable to all conditions or situations that may exist or occur. Vincotech reserves the right to make any changes without further notice to any products to improve reliability, function or design. No representation, guarantee or warranty is made to reader as to the accuracy, reliability or completeness of said information or that the application or use of any of the same will avoid hazards, accidents, losses, damages or injury of any kind to persons or property or that the same will not infringe third parties rights or give desired results. It is reader's sole responsibility to test and determine the suitability of the information and the product for reader's intended use.

LIFE SUPPORT POLICY

Vincotech products are not authorised for use as critical components in life support devices or systems without the express written approval of Vincotech.

As used herein:

1. Life support devices or systems are devices or systems which, (a) are intended for surgical implant into the body, or (b) support or sustain life, or (c) whose failure to perform when properly used in accordance with instructions for use provided in labelling can be reasonably expected to result in significant injury to the user.
2. A critical component is any component of a life support device or system whose failure to perform can be reasonably expected to cause the failure of the life support device or system, or to affect its safety or effectiveness.