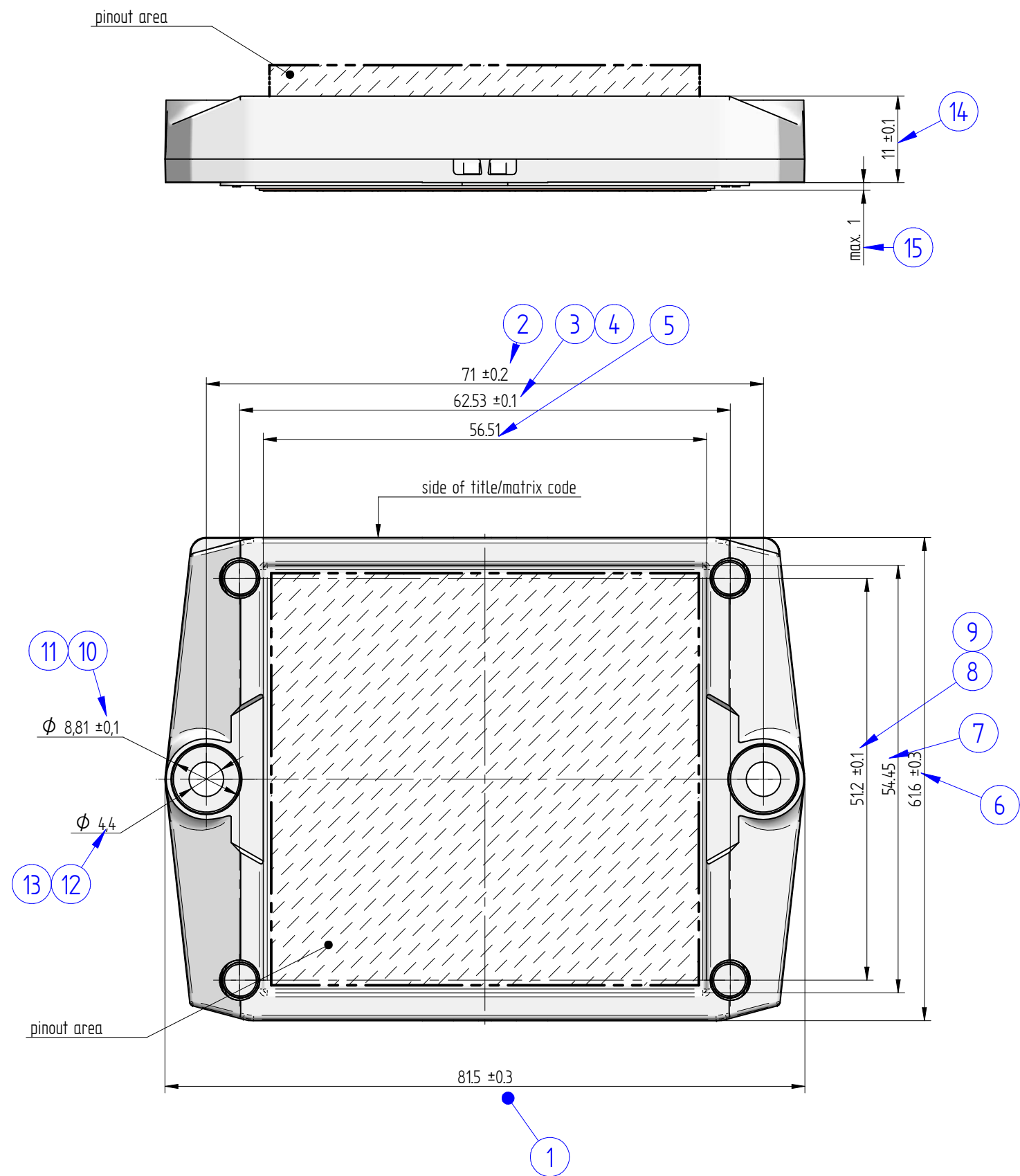
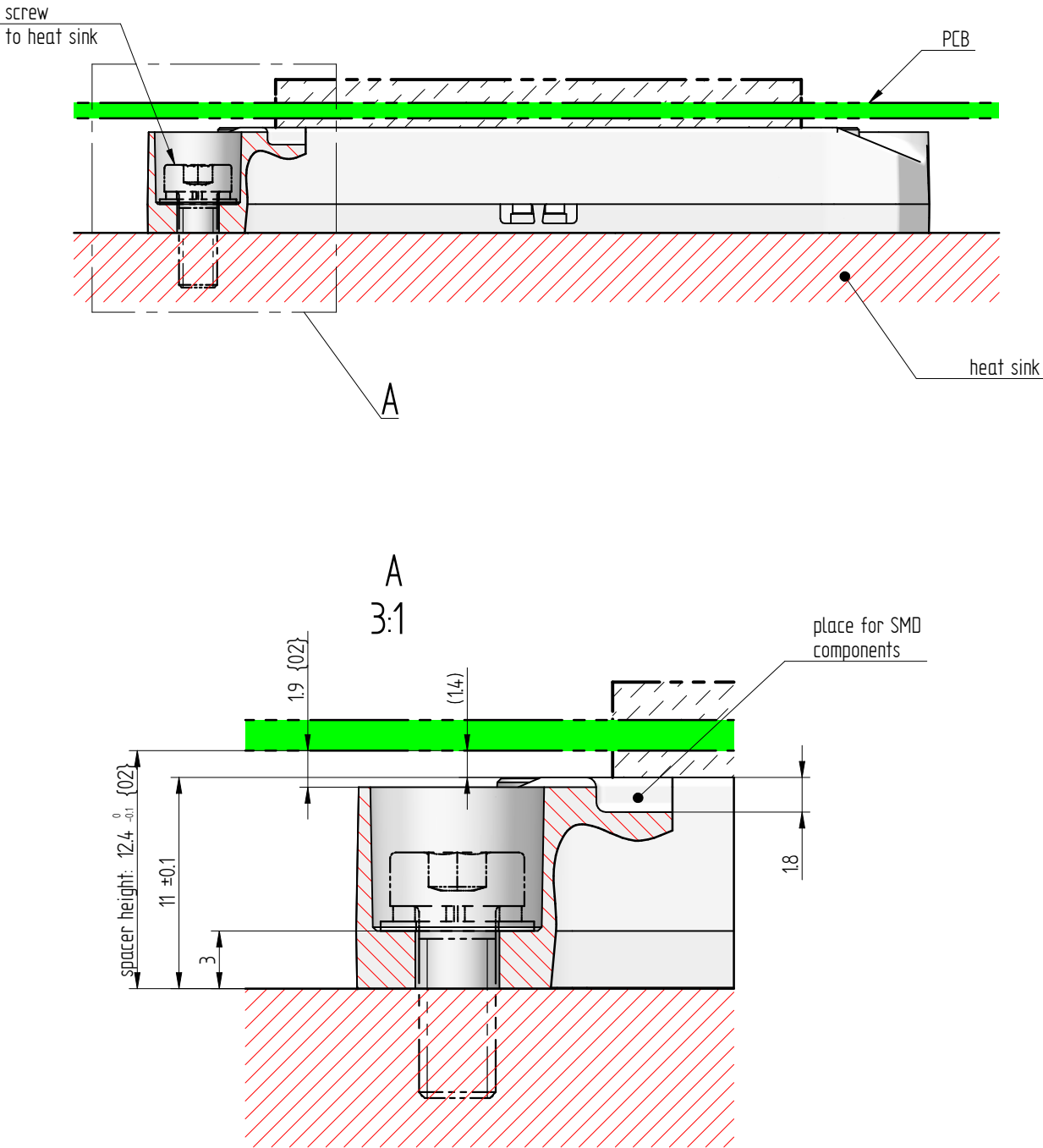





Before mounting



After mounting



PCB specification according to the actual handling instruction document
Refer to the module datasheet for actual pinout and 3D-CAD model

02	10.09.2024	minor package design changes		Gyimóthy Zs.	Géczy M.	Package Drawing	View scale 1.5:1
01	06.12.2023	initial release		Gyimóthy Zs.	Géczy M.		
Rev.	Date	Alteration		Designed	Approved		
General tolerances ISO 2768 - m , K				Ps A3		 Vincotech	Measurement numbering FlowS3-0T120-*PD
Linear dimensions				x<0.5 ±0.05 0.5≤x<6 ±0.1 6≤x<30 ±0.2 30≤x<120 ±0.3 120<x±0.5			
Chamfers, radii				x<0.3 ±0.05 0.3≤x<0.5 ±0.1 0.5≤x<3 ±0.2 3≤x<6 ±0.5 6<x±1		 IP Development	Drawing alteration in revision: {}
References				Inspectional dim:  Revision number (Rev.): *			
						